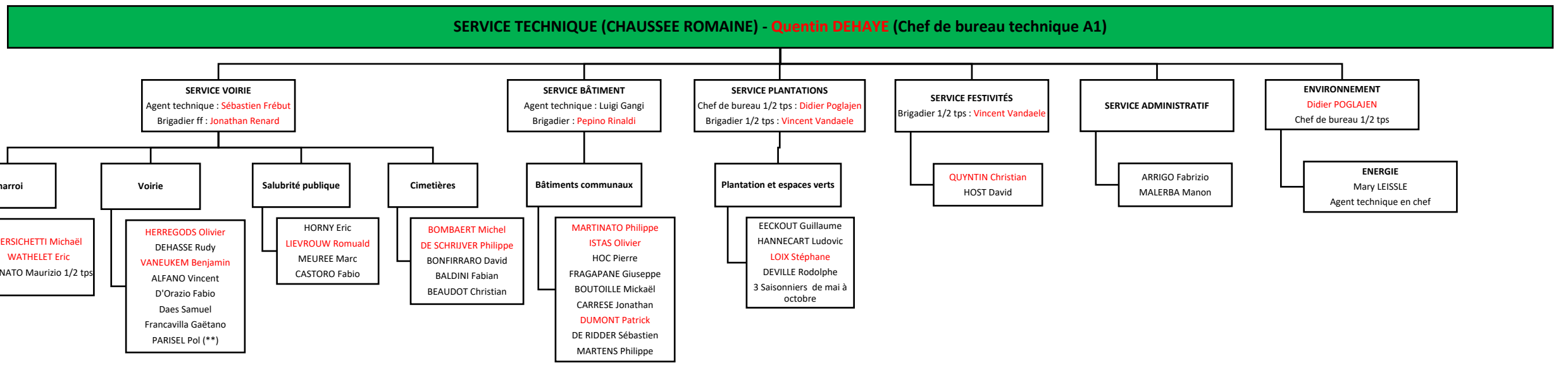
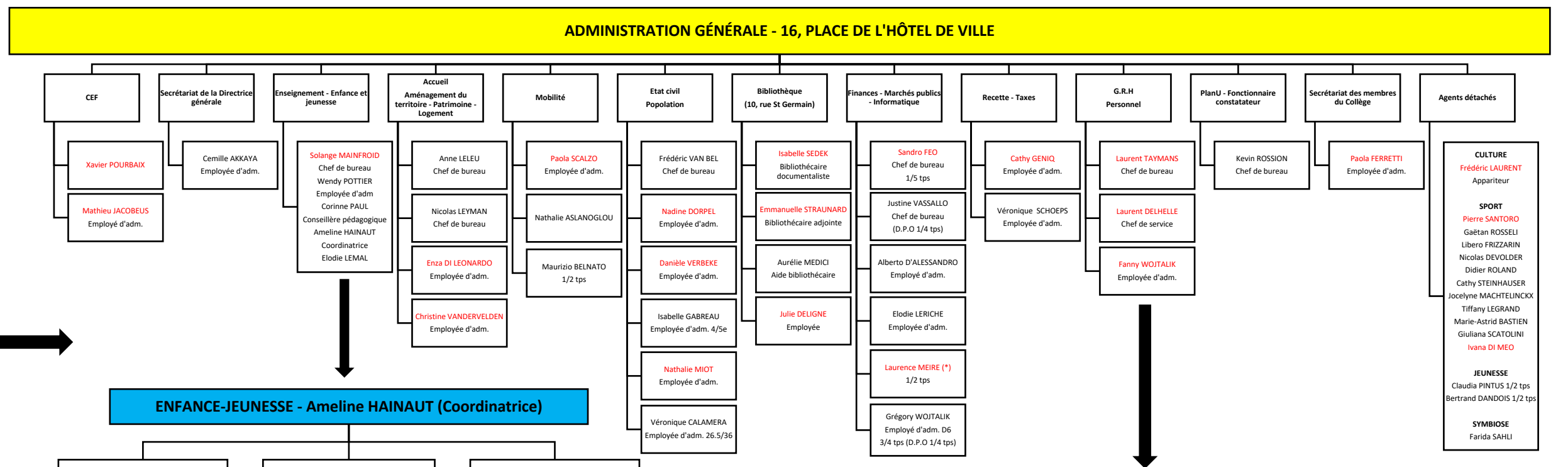


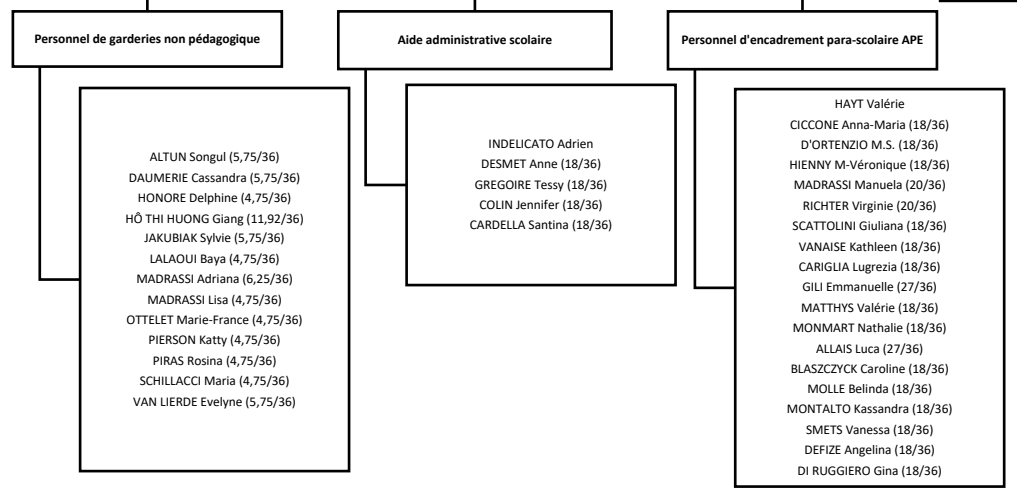
DIRECTEUR FINANCIER
David RENOUY



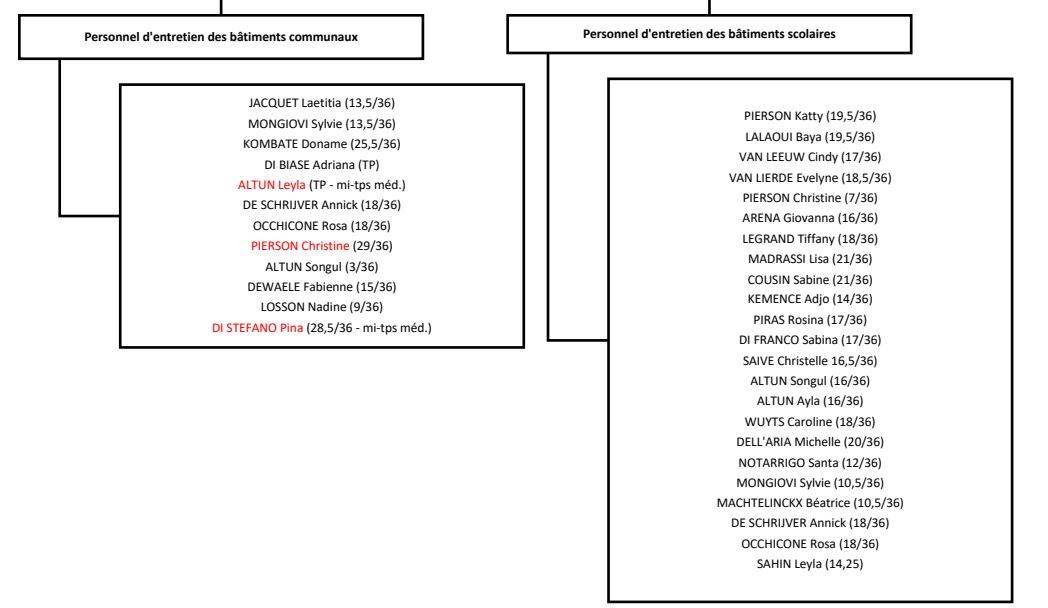
DIRECTRICE GENERALE
Emel ISKENDER



ENFANCE-JEUNESSE - Ameline HAINAUT (Coordinatrice)



ENTRETIEN - Laurent DELHELLE - Fanny WOJTALIK - Laurence MEIRE (*) 1/2 tps



LÉGENDE
Agent statutaire
(*) En congé

CONSEILLER EN PREVENTION
Régis JEUNIEAUX
Chef de bureau (2/3 tps)

COHESION ET STEWARDS - Cristelle MASQUILLIER (Chef de projet PCS)

